

## Introduction

One of the most important parameters in predicting the output of an oil reservoir is wettability. This parameter can vastly affect the ease with which the reservoir can be produced; but despite its importance, there are very few methods for getting an accurate wettability measurement. In this technical paper, a new method for measuring wettability using NMR is presented.

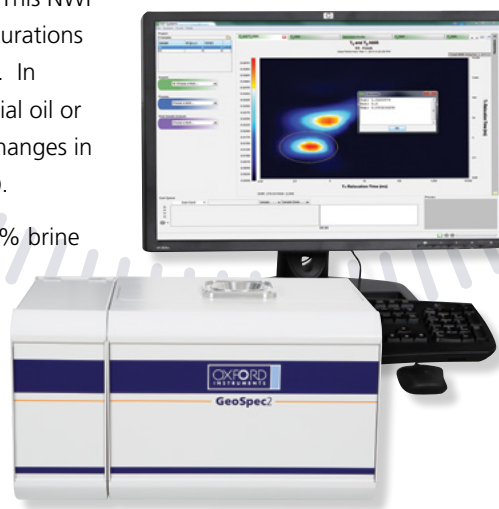
Wettability can be thought of as the tendency of a surface to maintain contact with a fluid. Inside the pores of a rock, this tendency of the surface can favor either water or oil adherence to the surface of the pores. Quantitatively this can be defined as [1],

$$I_w = \frac{A_w - A_o}{A_w + A_o} \quad [1]$$

where  $I_w$  is the wettability index,  $A_w$  is the surface area wetted by water and  $A_o$  is the surface area wetted by oil. From the equation it is obvious that if more surface area is wetted by water then  $I_w = 1$  to 0 and the rock is said to be water wet. Conversely, if there is more surface area wetted by oil then  $I_w = 0$  to -1 and the rock is said to be oil wet. Wettability is a crucial petrophysical parameter for determining accurate production rates in oil and gas reservoirs. However, industry standard wettability measurements (Amott Test and USBM) are expensive and time consuming.

It is known that NMR response varies as a function of wettability change in rock core plug samples [1-5]. This information was used to develop an NMR wettability index (NWI) based on  $T_2$  distributions [6,7]. This NWI is also capable of measuring changes in wettability as a function of oil/water saturations unlike traditional methods which are based on measurements at  $S_{wi}$  and  $S_{or}$  only. In addition, these oil/water saturations are determined without the aid of any special oil or brine, such as  $D_2O$ . This allows the NMR method to nondestructively monitor changes in wettability in real time (i.e. during a flooding experiment or an aging procedure).

In order to derive this NWI based on  $T_2$  distributions, the NMR  $T_2$  spectra of 100% brine saturated, 100% oil saturated, bulk oil and bulk brine are needed. These spectra are then mixed to give a predicted  $T_2$  spectrum which is compared (via a least squares fit) to a  $T_2$  spectrum recorded from a sample partially saturated with both water and oil and whose wettability is to be determined. In this application note, we present a new method which couples this  $T_2$ -based NWI to spatially resolved  $T_2$  NMR measurements to monitor changes in wettability and saturation along rock core plugs.



# Determination of rock core wettability by NMR



## Method

To determine the spatially resolved NWI of a sample whose wettability is unknown, the following procedure was followed.

1. Record  $T_2$  and spatial- $T_2$  spectra of the mixed saturation (i.e. brine/oil) sample whose wettability is to be determined. For example, an "as received" sample or one which was saturated in the lab with both oil and brine.
2. Clean and dry the sample. Saturate the sample to 100% with brine. Record the  $T_2$  and spatial- $T_2$  spectra of the 100% water saturated sample ( $S_{w-100\%}$ ).
3. Clean and dry the sample. Saturate the sample to 100% with oil of interest. Record the  $T_2$  and spatial- $T_2$  spectra of the 100% oil saturated sample ( $S_{o-100\%}$ ).
4. Record the  $T_2$  spectra of bulk brine and oil ( $S_{w-bulk}$  and  $S_{o-bulk}$ ).

For this work, a sample of mixed saturation and unknown wettability was created by first saturating a sandstone to 100% water saturation. The  $S_{w-100\%}$  sample was then centrifuged for approximately 12 hours surrounded by dodecane. This resulted in a sample of mixed saturation ( $S_{mix}$ ) and spinning the same sample at different speeds resulted in samples of differing dodecane/brine saturations. All NMR measurements were completed on an Oxford Instruments GeoSpec 2+-75 rock core analyser [8]. Acquisition and processing of the NMR data was achieved via Green Imaging Technologies software, GIT Systems Advanced [9].

## Data Analysis

Figure 1 shows the 100% oil saturated (orange trace), 100% brine saturated (blue trace), bulk brine (red trace) and bulk dodecane (green trace)  $T_2$  distributions for the sandstone sample analysed in this work. Also shown in Figure 1 is the  $T_2$  distribution of the sample of mixed saturation and unknown wettability (brown trace).

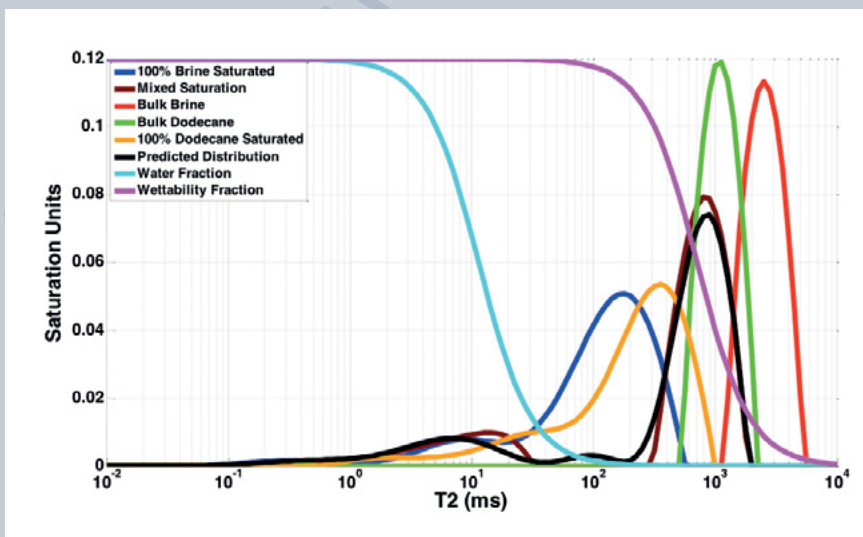
The predicted  $T_2$  distribution (Figure 1 – black trace) is generated by varying the contributions from the 100% oil saturated, 100% brine saturated, bulk brine and bulk dodecane  $T_2$  distributions via the following equation:

$$S_{pred} = WHS_{w-100\%} + (1-W)(1-H)S_{o-100\%} + (1-W)HS_{w-bulk} + W(1-H)S_{o-bulk} \quad [2]$$

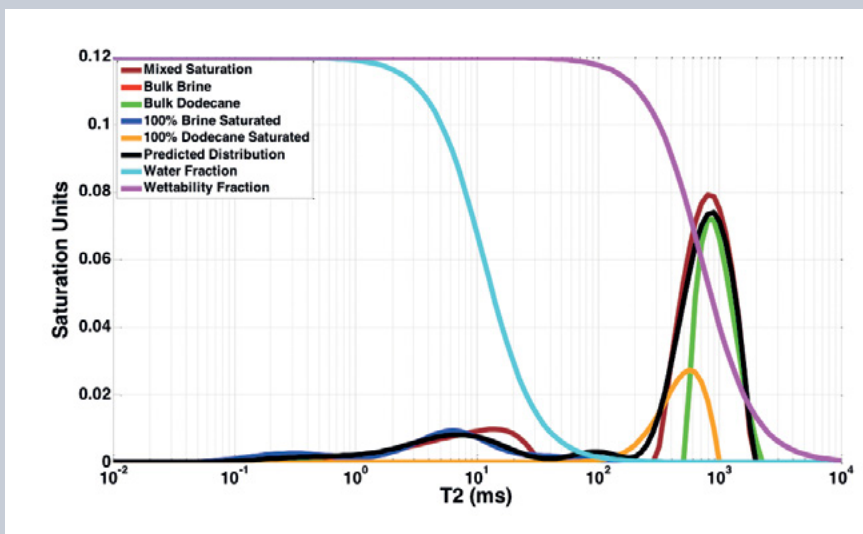
The contributions from each  $T_2$  distribution are controlled by the H and W functions. The typical forms of these equations are plotted as the light blue (H) and pink lines (W) in Figure 1. These functions are like step functions, where, for example, all pores to the left of the inflection point of the W function are wetted by water and all the pores to the right of the inflection point of the W function are wetted by dodecane. Conversely all the pores to the left of the inflection point of the H function are occupied by brine and all the pores to the right of the inflection point of the H function are occupied by dodecane. In a least-squares fit, the position of these functions is allowed to vary (left and right on the  $T_2$  axis) until there is good agreement between the predicted and measured  $T_2$  distributions of the sample of mixed saturation and unknown wettability. Figure 2 shows the contributions to the final predicted  $T_2$  distribution (Figure 1) from the  $S_{w-bulk}$ ,  $S_{o-bulk}$ ,  $S_{w-100\%}$  and  $S_{o-100\%}$   $T_2$  distributions. Once the final H and W functions are known they are used to generate the predicted saturation and wettability index for the



sample of mixed oil/brine saturation. For the data shown in Figure 1 and 2, this corresponds to a water saturation of 13% and wettability index equal to 0.89 (water wet). The data analysis was initially done in Matlab but was later implemented into Green Imaging Technologies software [9].



**Figure 1:** Typical bulk- $T_2$  spectra used for wettability determination. The brown  $T_2$  spectrum is recorded from the mixed wettability sample whose wettability is to be determined. The 100% brine saturated (blue), 100% dodecane saturated (orange), bulk dodecane (green) and bulk brine spectra (red) are then combined to give the predicted  $T_2$  distribution (black). The combination is done via use of the water (light blue) and wettability fraction functions (pink).



**Figure 2:** Bulk  $T_2$  spectrum (black) predicted from wettability fitting along with the measured bulk  $T_2$  spectrum (brown) are shown. Also shown are the contributions to the predicted spectrum from the bulk dodecane (green), 100% dodecane saturated (orange) and 100% brine saturated (blue) spectra are also shown. The water fraction (light blue) and wettability fraction (pink) are also shown.

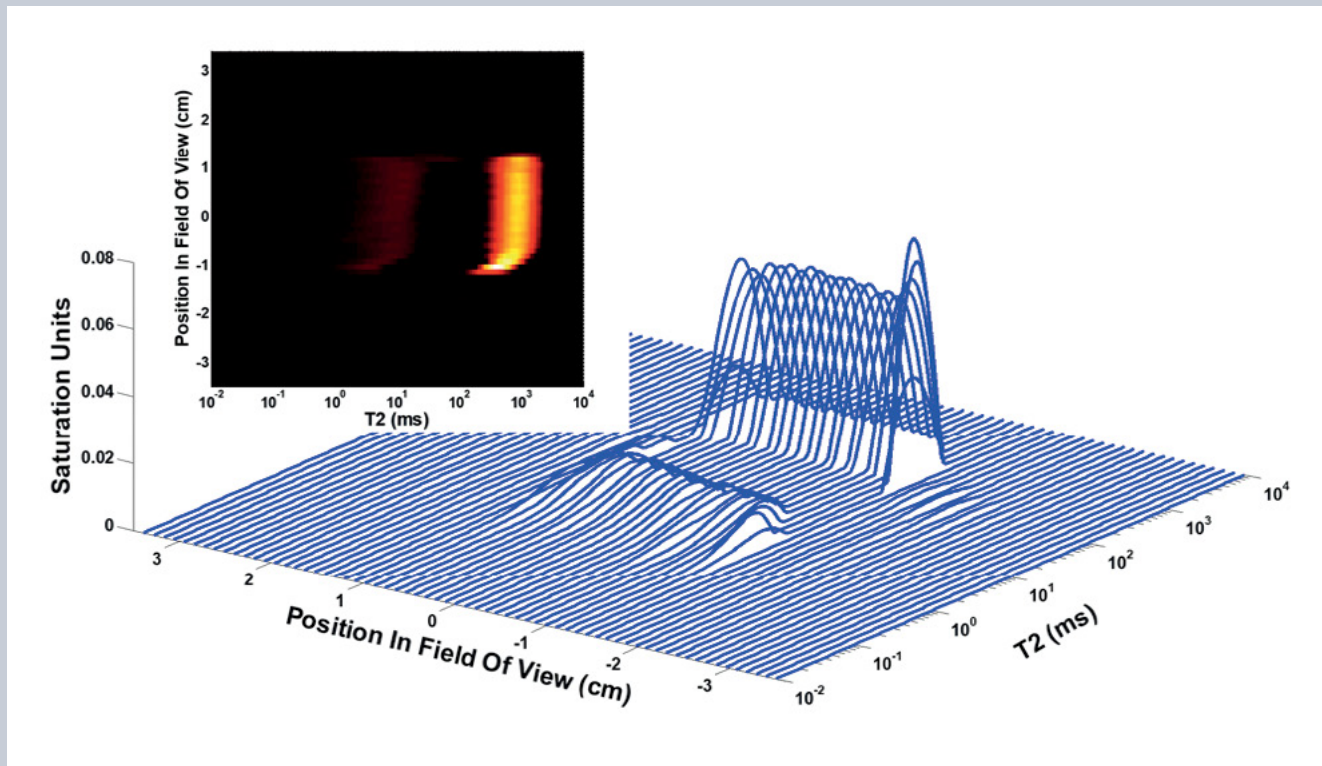


# Determination of rock core wettability by NMR



## Data Analysis *continued*

The previous explanation of the wettability analysis was for bulk  $T_2$  distributions which cover the entire length of the rock but this explanation applies also to the spatial- $T_2$  wettability analysis. The spatial analysis proceeds in the same manner as the bulk analysis but the 100% oil saturated, 100% brine saturated, and mixed saturation  $T_2$  distributions are for a given slice of the rock. Figure 3 shows a typical stack plot for a  $S_{\text{mix}}$  spatial- $T_2$  distribution along with an intensity plot (Figure 3-inset) generated from the same data. For example, the least-squares fit is then performed, minimising the difference between  $S_{\text{mix}}$  (slice 1) –  $S_{\text{pred}}$  using Equation 2 to generate  $S_{\text{pred}}$  where  $S_{w-100\%}$  and  $S_{o-100\%}$  are now from the first slice of their spatial- $T_2$  distributions. The least squares fit will result in H and W functions for slice 1. Wettability and saturation for the first slice are then derived for that slice from these H and W functions. This procedure is repeated until each slice of the spatial- $T_2$  distributions has been analysed and  $I_w$  and saturations as a function of position in the rock have been created.



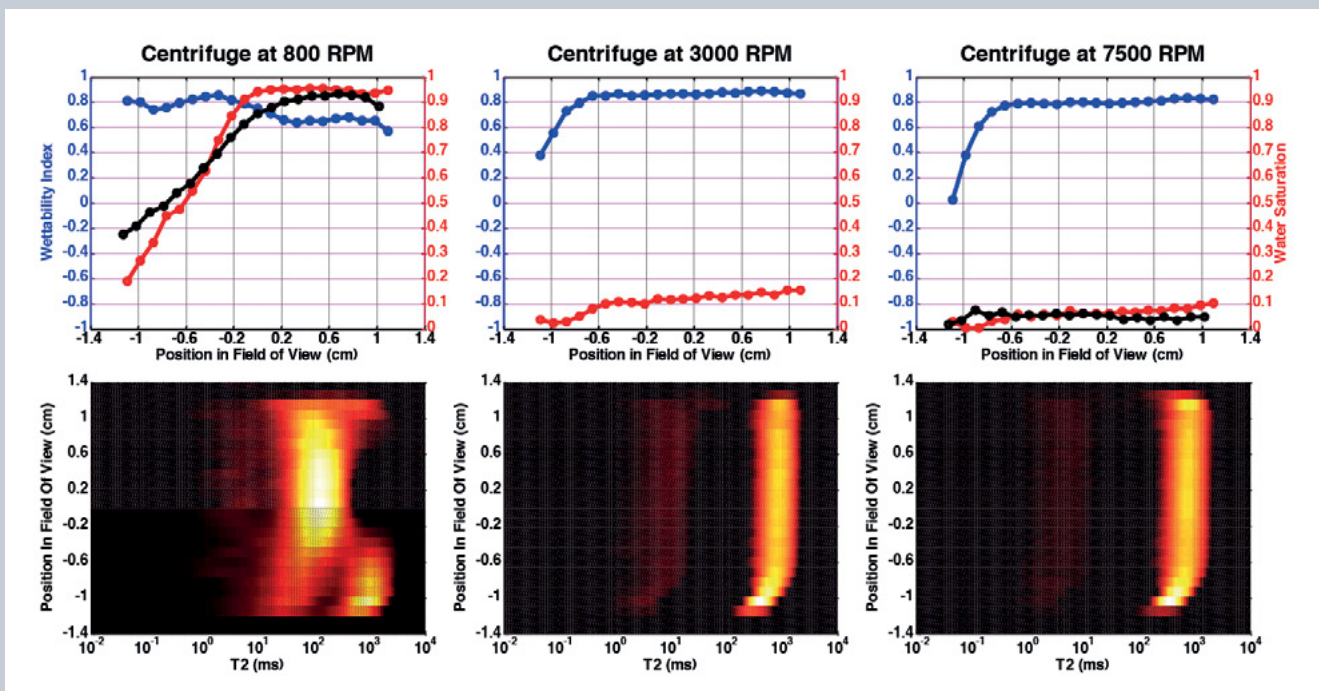
**Figure 3:** Spatial- $T_2$  spectra for the same sample as the bulk spectra in Figure 1. The inset shows the intensity plot generated from the spatial- $T_2$  data. The intensity plot is a top view of the spatial- $T_2$  data where the intensity of each pixel corresponds to the magnitude of the  $T_2$  distribution at that position in the rock.



## Results

Figure 4 shows the spatial- $T_2$  wettability analysis completed on the sandstone sample. The upper plots show the spatially dependent wettability (blue traces) and saturation (red traces) profiles derived for each centrifuge speed tested. The rocks began at 100% brine saturated and had dodecane spun into them from left to right on the upper plots of Figure 4. Also shown in the upper panels of Figure 4 are the saturation profiles (black traces) derived from separate measurements where the rock was initially saturated to 100% with  $D_2O$  rather than  $H_2O$  before having dodecane spun into them. Employing NMR invisible  $D_2O$  allowed the saturation profiles to be derived directly from the NMR data. It should also be noted that because  $D_2O$  is denser than  $H_2O$ , the centrifuge speeds were reduced to match the capillary pressures employed with  $H_2O$ . These  $D_2O$  profiles were

*continued overleaf*



**Figure 4:** The predicted wettability (blue) and saturation (red) profiles for rock 109S are plotted in the upper panels. Samples of differing saturations were manufactured by spinning dodecane into 100% brine saturated samples at differing centrifuge speeds (800, 3000 and 7500 RPM). The dodecane entered the rock from left to right as observed on the upper plots. The black trace corresponds to the saturation profiles measured using the same samples initially saturated with  $D_2O$  in lieu of  $H_2O$ . The lower panels show the intensity plots generated from the spatial- $T_2$  data from the mixed saturation samples.



# Determination of rock core wettability by NMR



## Results continued

then used to independently verify the accuracy of the profiles derived from the wettability fitting. There is no similar method for verifying the wettability as a function of position. The lower panels of Figure 4 show the intensity plots created from the spatial- $T_2$  data for the mixed saturation samples tested at each centrifuge speed.

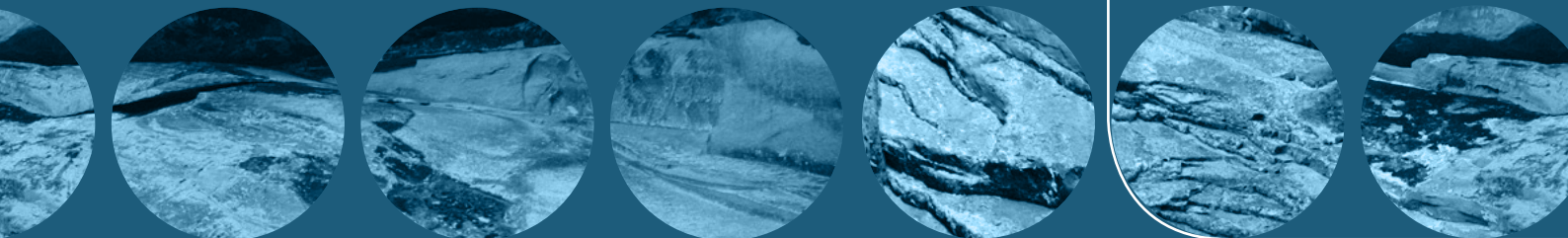
For 800 RPM, the saturation profile derived from wettability fitting agrees well with that measured using  $D_2O$ . There is clearly a saturation gradient along the length of the rock. The average saturation for the rock is 0.71. The wettability on the other hand does not show the same variability with position. It is relatively constant across the rock independent of both position and water saturation. The average wettability across the rock is 0.73 making the rock water wet. For 3000 RPM, the saturation across the rock is now relatively uniform and significantly reduced as compared to 800 RPM. The average saturation is now 0.11 and the average wettability is now 0.82.  $D_2O$  data was not recorded at 3000 RPM so there is no comparison between the predicted and measured saturation profiles. For 7500 RPM, the saturation and wettability are again uniform along the rock. The average saturation is now 0.06 and the saturation profile agrees well with the corresponding  $D_2O$  saturation profile. The average wettability is now 0.73. Both the saturation and wettability have decreased only slightly as compared to 3000 RPM.

While no other technique exists for measuring wettability as a function of position, the average wettability derived from the spatial- $T_2$  data can be compared with wettability determined from other methods such as the Fleury NMR method [1] and an Amott test. These comparisons were completed for the sandstone sample and the results are summarised in Table 1. For the sake of this comparison, the 7500 RPM data was used. While there is no reason to think the absolute value for the wettabilities derived from each method summarised in Table 1 should be equal, there should still be consistency in the wettability predicted for each rock. This is true for the data summarised in Table 1 where each method indicates that each rock is water wet.

Wettability Technique	Wettability
Average wettability from Spatial- $T_2$ (this work – 7500 RPM)	0.73
Fleury NMR Method	0.43
Amott Test	0.21

**Table 1:** Wettability Comparisons





## Conclusion

A new method for determining the wettability as a function of position in a core sample has been presented. This method couples the wettability determination via NMR  $T_2$  distributions method first presented by Looyestijn et al. [6,7] with spatial- $T_2$  data. Using this method, we have successfully determined the wettability as a function of position for a sandstone sample with mixed oil/water saturations. This new measurement opens a new range of wettability-based experiments, including the ability to track wettability during a flooding experiment, as well as measuring wettability at different saturation levels during one measurement from one sample.

Signal intensive measurements such as the spatial  $T_2$  measurement used here have been impractical on previous generations of NMR instruments due to long measuring times. Advancements in instrument design and performance, such as those found on the GeoSpec+ product line, now make these measurements possible.



## References

1. Fleury, M. and Deflandre, F., "Quantitative evaluation of porous media wettability using NMR relaxometry", *Magnetic Resonance Imaging* (2003), 21, 385-387.
2. Howard, J.J., "Quantitative estimates of porous media wettability from proton NMR measurements", *Magnetic Resonance Imaging* (1998), 16, 529-533.
3. Borgia, G. C., Fantazzini, P. and Mesini, E., "Wettability effects on oil-water configurations in porous media, a nuclear magnetic resonance relaxation study", *J. Appl. Phys.*, 70, 7623-7625.
4. Hsu, W. F. and Flumerfelt, R. W., "Wettability of porous media by NMR relaxation methods", *SPE Annual Technical Conference and Exhibition, Washington, D.C., USA, 4-7 October 1992*.
5. Freedman, R., Heaton, N., Flaum, M., Hirasaki, G. J., Flaum, C. and Hurlimann, M., "Wettability, saturation and viscosity from NMR measurements", *SPEJ*, 8, 317-327.
6. Looyestijn, W.J. and Hofman, J.P., "Wettability Index Determination by Nuclear Magnetic Resonance", *SPE 93624, presented at the MEOS, Bahrain, March 2005. Published in SPERE April 2006, pp 146 – 153*.
7. Looyestijn, W., Zhang, X., and Hebing, A., "How can NMR assess the wettability of a chalk reservoir?", *Society of Core Analysts, Vienna, Austria, 27 August-1 September 2017*.
8. *Geo-Spec 2-75 User Manual, Version 1.8, Oxford Instruments*.
9. *GIT Systems and LithoMetrix User Manual, Revision 1.9, Green Imaging Technologies*.





## Oxford Instruments Magnetic Resonance

For almost 30 years, Oxford Instruments has been the industry standard for NMR instrumentation for core analysis. With over a hundred installations, Oxford Instruments truly understands the needs of core analysts, whether they be in oil companies, oilfield service companies or academia.

Innovation has been the driving force behind Oxford Instruments' growth and success ever since the business spun out from the University of Oxford over 50 years ago. It is now a global company with over 1,300 staff worldwide and a listing on the London Stock Exchange (OXIG).

## Green Imaging Technologies

Green Imaging Technologies is committed to providing innovative solutions for lab-based analysis of rock core via Nuclear Magnetic Resonance (NMR). GIT's products and services offer fast, accurate, non-destructive analysis of rock core samples used by the oil and gas industry in exploration and reservoir characterisation.

Beginning with a patented capillary pressure measurement technique in 2005, GIT has the goal of making NMR core analysis more accessible and expanding the analysis that can be done with NMR. GIT's product offerings have evolved and expanded to include a full suite of routine and advanced core analysis tools. A culture of continual innovation has driven the company to be the industry leader in NMR core analysis.



## Oxford Instruments Magnetic Resonance

For more information: [magres@oxinst.com](mailto:magres@oxinst.com)  
[www.oxinst.com/geospec](http://www.oxinst.com/geospec)

### UK

Tubney Woods, Abingdon, Oxfordshire, OX13 5QX, UK  
**Tel:** +44 (0) 1865 393 200 **Fax:** +44 (0) 1865 393 333

### USA

300 Baker Avenue, Suite 150, Concord, MA, 01742, USA  
**Tel:** +1 978 369 9933 **Fax:** +1 978 369 8287

### China

Floor 1, Building 60, No.461, Hongcao Road, Shanghai, 200233, China  
**Tel:** +86 21 6073 2925 **Fax:** +86 21 6360 8535

## Green Imaging Technologies

For more information: [info@greenimaging.com](mailto:info@greenimaging.com)  
[www.greenimaging.com](http://www.greenimaging.com)

### Canada

520 Brookside Drive, Suite B, Fredericton, NB, E3A 8V2, Canada  
**Toll Free:** +1 888 944 8462  
**Tel:** +1 506 458 9992 **Fax:** +1 506 458 9615

This publication is the copyright of Oxford Instruments plc and provides outline information only, which (unless agreed by the company in writing) may not be used, applied or reproduced for any purpose or form part of any order or contract or regarded as the representation relating to the products or services concerned. Oxford Instruments' policy is one of continued improvement. The company reserves the right to alter, without notice the specification, design or conditions of supply of any product or service. Oxford Instruments acknowledges all trademarks and registrations.  
© Oxford Instruments plc, 2018. All rights reserved. Ref: MR/202/0718

